



LOMA LINDA UNIVERSITY
HEALTH
RESEARCH AFFAIRS

Leveraging Grants to Achieve your Mission

Michael R. Samardzija, PhD, JD
Vice President, Research Affairs

Types of grants

- Research
- Training
- Service
- Construction

Why should we engage in research

- To meet our mission
 - To continue the teaching and healing ministry of Jesus Christ

True Education 12.1

Every human being, created in the image of God, is **endowed with a power** akin to that **of the Creator**—individuality, **power to think and to do**. The men and women in whom this power is developed are those who bear responsibilities, who are leaders in enterprise, and who influence character. **It is the work of true education to develop this power, to train young people to be thinkers, and not mere reflectors of other people's thought**. Let students be directed to the sources of truth, to the vast fields opened for research in nature and revelation. Let them contemplate the great facts of duty and destiny, and the mind will expand and strengthen.

Types of research

- Hard sciences
- Basic sciences
- Clinical
- Community

Requirements for research on humans

- Clinic
- Hall for training/teaching
- Laboratory
- Equipment
- Computer
- Secure file cabinet
- Institutional Review Board

Requirements for research on nonhumans

- Laboratory
- Equipment
- Computer
- Animal housing facility
- Secure file cabinet
- Institutional Animal Care and Use Committee

Requirements for research on dangerous products

- Laboratory
- Equipment
- Computer
- Cell culture facility
- Special facility for viruses/bacteria
- Secure file cabinet
- Institutional Biosafety Committee

Funding – catch22

- You need publications to obtain funds
- You need funds to perform experiments to publish
- Focus on publications

Training grants

Creating a Hispanic Center of Excellence in Pharmacy at Loma Linda University

Dr. Willie Davis

Serve as innovative, education resource centers to recruit, train, and retain Hispanic students and faculty at our school of pharmacy

<https://news.llu.edu/academics/34-million-grant-will-establish-school-of-pharmacy-nation-s-first-hispanic-center-of-excellence-pharmacy>



Service grants

Loma Linda University Health Hospital Based Violence Intervention Program

Dr. Sigrid Burruss

- Identify individuals at high risk or having sustained violent injury and connect them in the safety of the hospital environment
- Community health workers trained in violence intervention and prevention help these people identify and address social determinants of health
- Intensive case management continuing upon discharge from the hospital back into the community with connections to many community programs and services

<https://news.llu.edu/patient-care/lluh-receives-51-million-state-grant-expand-violence-prevention-initiative>



Research grants with a service component

Improving smoking cessation outcomes of at-risk pregnant women

Drs. Anne Berit Petersen and Pramil Singh

Design and test a new program that adds eight home visits by community health workers to provide tobacco cessation support services to pregnant smokers before and after the quit date set with their doctor.

<https://news.llu.edu/research/transdisciplinary-tobacco-research-program-awarded-over-1-million-grants>



Construction

When writing grants

Be truthful

Be realistic

Be succinct

Write as though you are telling a story

Funding Agencies

- Governmental
 - U.S. Department for Health and Human Services
 - Health Resources and Services Administration (HRSA)
 - National Institutes of Health (NIH)
 - U.S. Department of Defense
 - U.S. Department of Education
 - U.S. Department of Commerce
 - U.S. Agency for International Development (USAID)
- Non-Governmental Entities
 - E.g., World Health Organization
- Foundations
 - E.g., Bill and Melinda Gates Foundation

Grants for Research and School Partnership- International

- To promote collaborative research and **capacity building** between LLUH faculty and professionals who have post-baccalaureate degrees and are employed by international SDA hospitals, medical centers, medical schools or universities.
- To encourage faculty to **collaborate with international SDA researchers** in the design of innovative, interdisciplinary research in pioneering research projects.
- To develop grant preparation skills and generate preliminary data for **subsequent extramural proposals**.

<https://researchaffairs.llu.edu/pre-post-award/pre-award/grants-for-research-and-school-partnerships-grasp>

GRASP Int'l



LOMA LINDA UNIVERSITY
HEALTH
RESEARCH AFFAIRS

Grants for Research and School Partnerships
<https://researchaffairs.llu.edu/>

GRASP-Int'l

LOI Due Date	Late March – To be announced
Application Due Date	September 18, 2023
Award Announcement	Late December before starting year
Number of Co-PIs	2 (1 LLU faculty, 1 Int'l Adventist institution healthcare provider or faculty with advanced degree)
Total Awarded Amount	\$75,000
Duration of Award	Up to 24 months
No. of Awards per cycle	To be determined
PI Salary Support	NO
Budget Restrictions	Only non-faculty salaries and wages are permitted. Award may not be used for equipment costing \$5,000 or more (unless justified), or IDC.
Performance Site	Conducted at LLUH or Int'l Adventist institution site
Publications	At least 1 peer-reviewed publication within the past year by either PI
Prior Awardees	a. Had published/accepted for publication 1 or more manuscripts, or b. Submitted at least 1 extramural application
Revised Application	Include 1 page introduction

Contact:

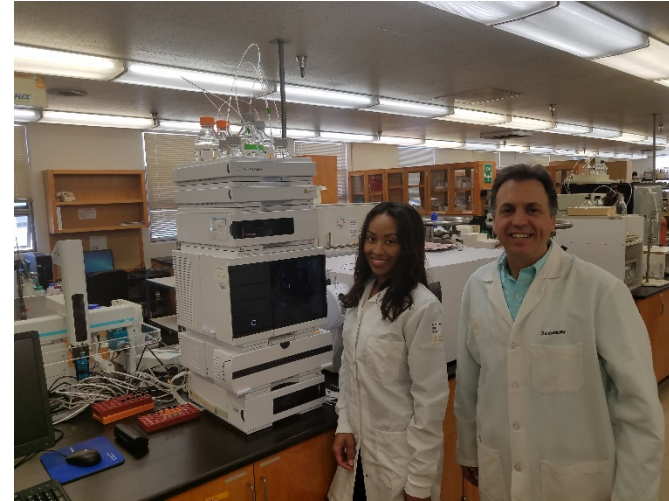
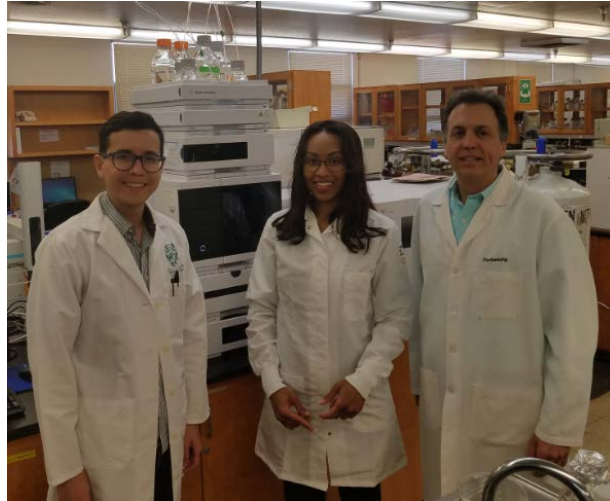
Wesley James, MA, MPH, Manager, Strategic Research Alliances
wjames@llu.edu

Awardees

YEAR	INSTITUTION
2018	<ul style="list-style-type: none">• Universidad Adventista del Plata, Argentina
2020	<ul style="list-style-type: none">• Universidad Adventista del Plata, Argentina
2021	<ul style="list-style-type: none">• Babcock University, Nigeria• Malamulo Hospital, Malawi• Universidad Adventista del Plata, Argentina
2022	<ul style="list-style-type: none">• Babcock University, Nigeria• Andrews Memorial Hospital, Jamaica• Adventist University of Africa, Kenya

2018 GRASP International Awardees

(First Awardee)



Gerardo Guerrero, Research Associate (UAP); Fayth Miles, PhD, Co-PI (LLU - SPH), Fabio Pacheco, MD, Co-PI (UAP)

Institutions: LLUH, USA and Universidad Adventista del Plata (UAP), Argentina

Project Title: Inflammatory responses associated with N-glycolylneuraminic acid comparing vegetarian and nonvegetarian dietary patterns of participants in the Adventist Health Study-2

Date of Project: January 1, 2018 – December 31, 2019

Amount: \$75,000

2020 GRASP International Awardees



Co-PIs: Gina Siapco, DrPH (LLU) / Sandaly Pacheco, MD (UAP)

Institutions: LLUH, USA and Universidad Adventista del Plata (UAP), Argentina

Project Title: Adventist Health, Lifestyle and Environmental Study in Argentina (AHLESA)

Date of Project: February 1, 2020 – January 31, 2022

Amount: \$75,000

2021 GRASP International Awardees

Co-Principal Investigators:



Mark Reeves, MD, PhD
(LLU)



Moses Kasumba, MD, FCS
(Malamulo)



Institutions: LLUH, USA and Malamulo Adventist Hospital, Malawi

Project Title: Immune checkpoint inhibitors to treat advanced cervical, esophageal, and prostate cancers in Malawi: A multi-center pilot study

Date of Project: March 1, 2021 – February 28, 2023

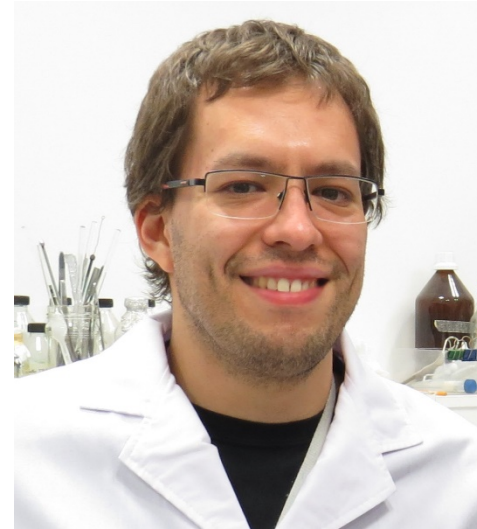
Amount: \$75,000

2021 GRASP International Awardees

Co-Principal Investigators:



Penelope Duerksen-Hughes, PhD
(LLU)



Martin Mayta, PhD
(UAP)



Institutions: LLUH, USA and Universidad Adventista del Plata (UAP), Argentina
(Other International Partners: Chad, Haiti, Nepal, and Rwanda)

Project Title: LLISN – Loma Linda International Surveillance Network

Date of Project: April 1, 2021 – March 31, 2023

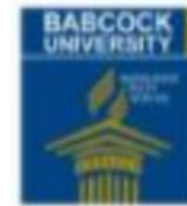
Amount: \$75,000

2021 GRASP International Awardees

Co-Principal Investigators:



Ifeanyi Nwachukwu, PhD
(LLU-SPH)



Godswill N. Anyasor, PhD
(Nigeria)

Institutions: *LLUH, USA and Babcock University, Nigeria*

Project Title: *“Does a low-carb, high-fat conophor nut-based keto diet lead to weight loss and improve cardio-metabolic health?”*

Project Period: *June 15, 2021 – June 14, 2023*

Amount: *\$74,743*

2022 GRASP International Awardees

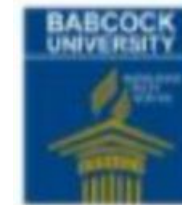
Co-Principal Investigators:



Oleksandr Dubov, PhD
(LLU-SBH)



Olumide Abiodun, MBChB (Ife), MPH, FWACP
(Nigeria)



Institutions: *LLUH, USA and Babcock University, Nigeria*

Project Title: *“Optimizing access to HIV self-testing based on preferences of key populations in Nigeria: a discrete choice experiment”*

Project Period: *January 3, 2022 – December 29, 2023*

Amount: *\$75,000*

2022 GRASP International Awardees

Co-Principal Investigators:



Zephon D. Lister, PhD (USA)
(LLU-SBH)



Safary Wa-Mbaleka, PhD
(Kenya)



Institutions: *LLUH, USA and Adventist University of Africa, Kenya*

Project Title: *“Families, Schools and Community Engaged Together (FASCET): A Community Resiliency Model (CRM) Based Family Resiliency Program for 5th Grade Students in North Kivu Province of the Democratic Republic of Congo.”*

Project Period: *June 1, 2022 – May 31, 2024*

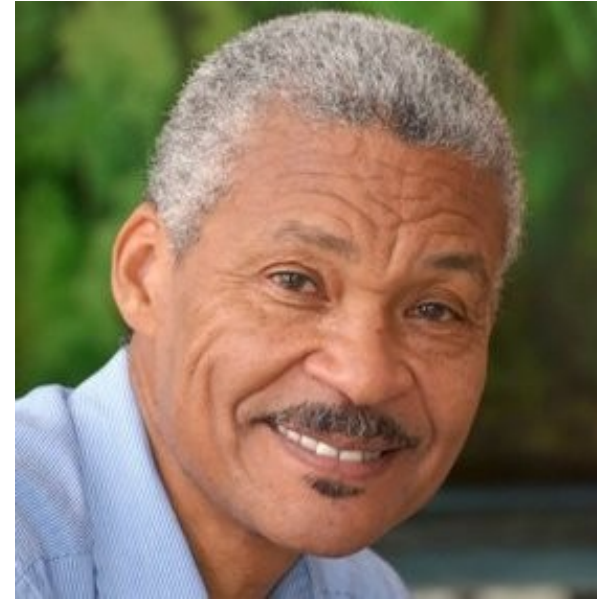
Amount: *\$72,710*

2022 GRASP International Awardees

Co-Principal Investigators:



Hansel M. Fletcher, PhD
(LLU-SM)



Patric R. Rutherford, PhD
(Jamaica)



Institutions: *LLUH, USA and Andrews Memorial Hospital, Jamaica*

Project Title: *"A Proposed Loma Linda University Health International Center for Antimicrobial Resistance Surveillance (LLUH-ICARS): A Pilot for a Private Healthcare Sector Model."*

Project Period: *May 1, 2022 – April 30, 2024*

Amount: *\$75,000*