

LOGO

EQUIPMENT AND REHABILITATION PROJECT FOR SONGA HOSPITAL

LOGO

1. ADVENTIST HEALTH INTERNATIONAL(AHI), 2. GLOBAL HEALTH INSTITUTE (GHI) 3. LLUH GLOBAL CAMPUS 4. SONGA HOSPITAL
1 LOMA LINDA UNIVERSITY HEALTH, 2. LOMA LINDA UNIVERSITY HEALTH, 3. LOMA LINDA UNIVERSITY HEALTH, 4. EAST CONGO UNION MISSION (ECUM)

THE PROBLEM

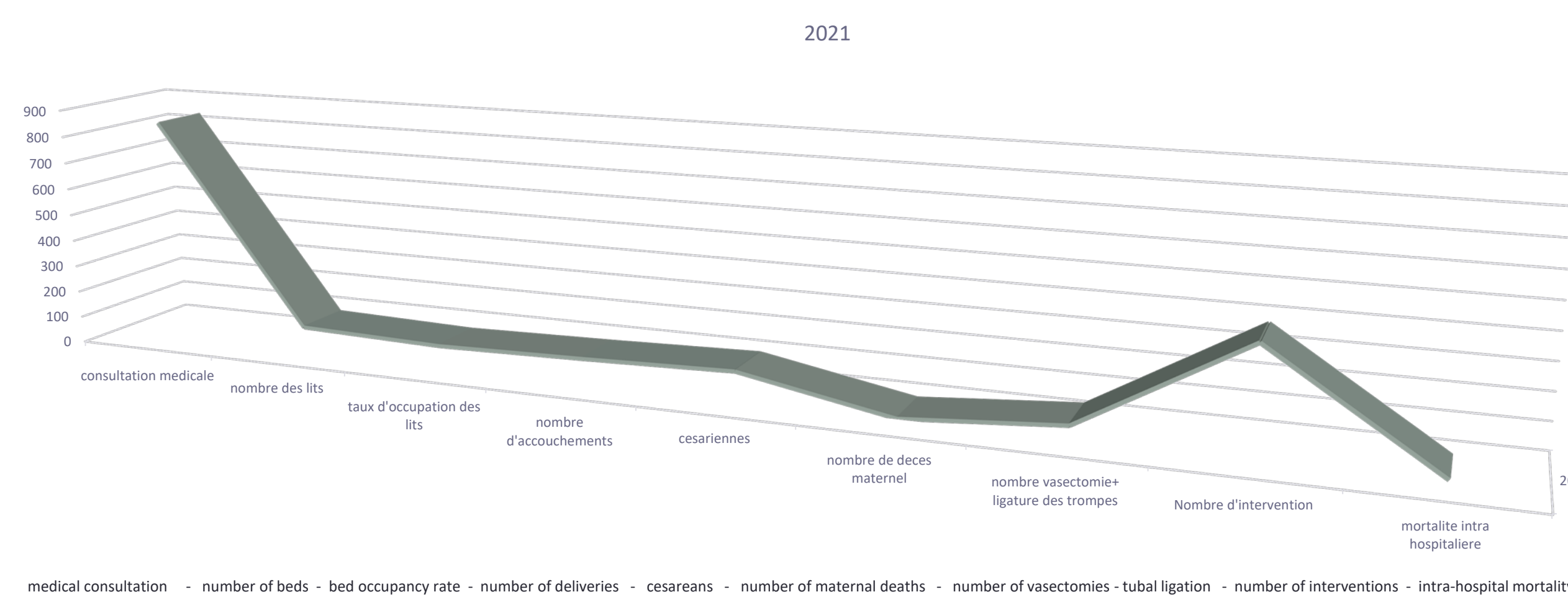
Songa Hospital is a structure located in a rural area 47 miles from Kamina and whose population in its health zone is 228,518 inhabitants. So to meet the health needs of its population, the Songa hospital needs: ultrasound and x-ray machines, equipment and materials for the operating room and hospitalization, equipment and rehabilitation of the maternity ward.

GOAL

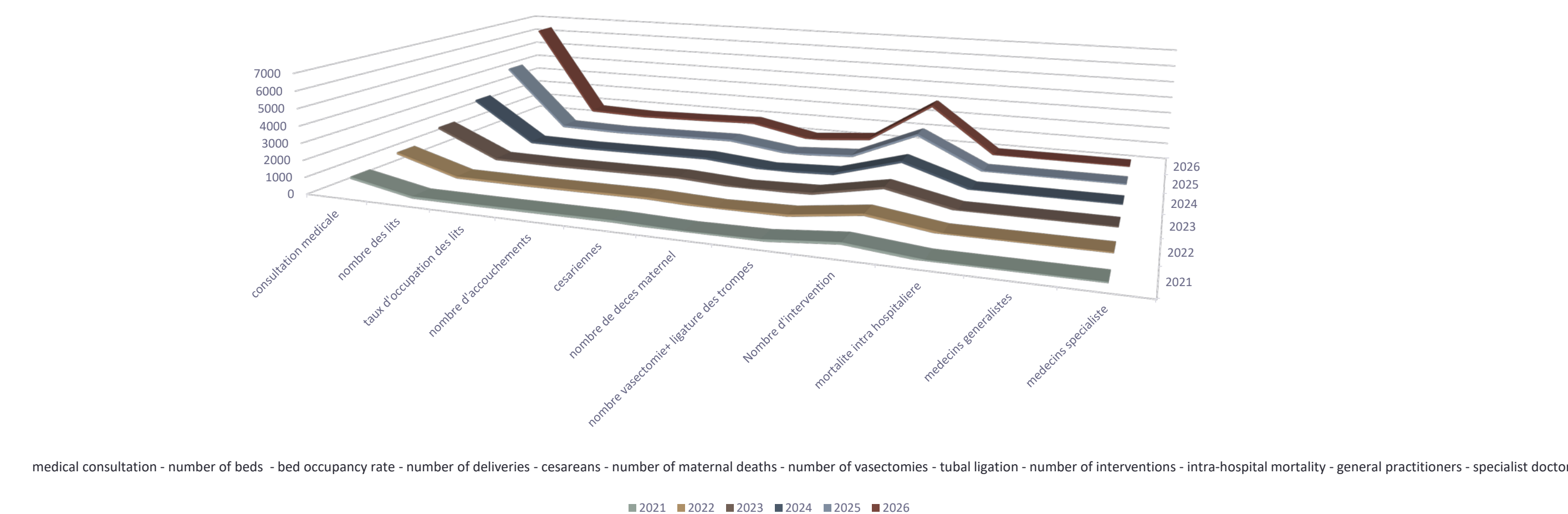
To meet the needs of the population of the Songa mission, the Songa Hospital needs:

- equipment: in the fields of imaging, laboratory, operating room, hospitalization, maternity, reanimation and other equipment in general surgery and traumatology.
- rehabilitation of the operating room and the maternity ward.

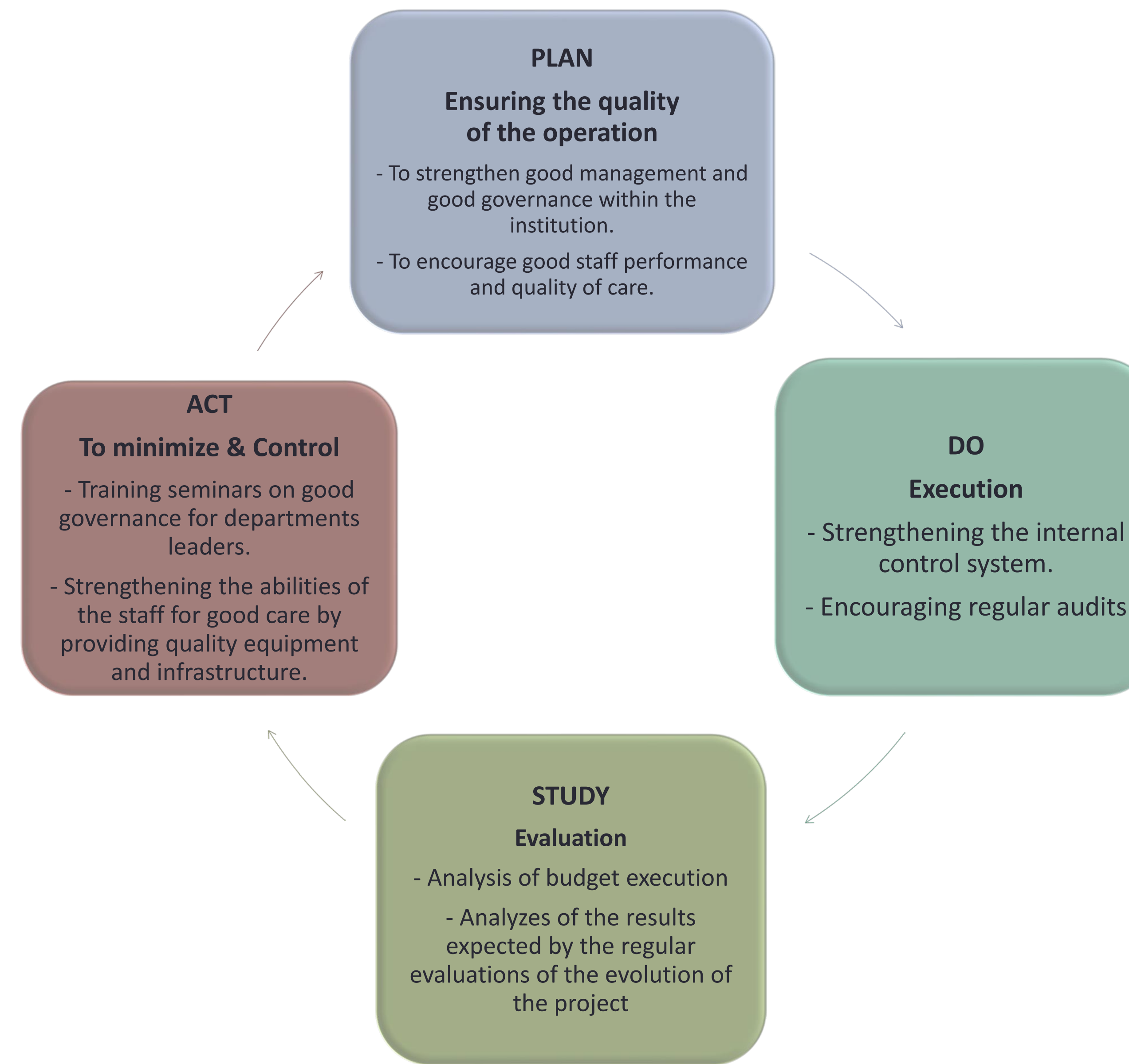
CURRENT STATE FLOW MAP



FUTURE STATE FLOW MAP



PLAN DO ACT STUDY CYCLE



RESULTS

Providing the Songa general hospital with an x-ray machine will help to ensure good management of cases of fractures, pneumonia, Covid, etc., which will reduce disability and mortality.

Having an anesthesia table will reduce the perioperative and postoperative mortality rate in the community,

The rehabilitation of the maternity ward and especially its endowment of materials (beds, mattresses, sheets, incubator), will reduce the rate of home births, the rate of neonatal and maternal mortality.

SUMMARY

Taking into account the needs of the population in the health zone of Songa with the concern of reducing the mortality of its patients and improving the quality of care, the Songa hospital comes to seek support from church partners in materials, equipment, machines, staff training and rehabilitation of its infrastructure to improve the quality and performance of patient care

NEXT STEPS/AND AFTER?

- Continuing to consolidate the quality of performance by maintaining this partnership.