

EQUIPMENT AND REHABILITATION PROJECT OF THE LUBUMBASHI ADVENTIST MEDICAL CENTER

1. ADVENTIST HEALTH INTERNATIONAL(AHI), 2. GLOBAL HEALTH INSTITUTE (GHI) 3. LLUH GLOBAL CAMPUS 4. LUBUMBASHI ADVENTIST MEDICAL CENTER
1 LOMA LINDA UNIVERSITY HEALTH, 2. LOMA LINDA UNIVERSITY HEALTH, 3. LOMA LINDA UNIVERSITY HEALTH, 4. EAST CONGO UNION MISSION (ECUM)

TEAM LEADER: Dr SANGWA MUSEMA Patrick, Director Health Ministry, EAST CONGO UNION MISSION (ECUM)

project beginning: 2022
project ending: 2026

A3

PROBLEM

It is about an equipment and rehabilitation project for the Lubumbashi Medical Center in Lubumbashi.

The Lubumbashi Adventist Medical Center is a structure located in the center of the city of Lubumbashi in the province of Haut-Katanga. The city of Lubumbashi currently has around 2,096,961 inhabitants and its health situation is characterized by the high prevalence of malaria, HIV/AIDS, cardiovascular pathologies, respiratory ailments, Covid-19, ... thus constituting a serious public health problem.

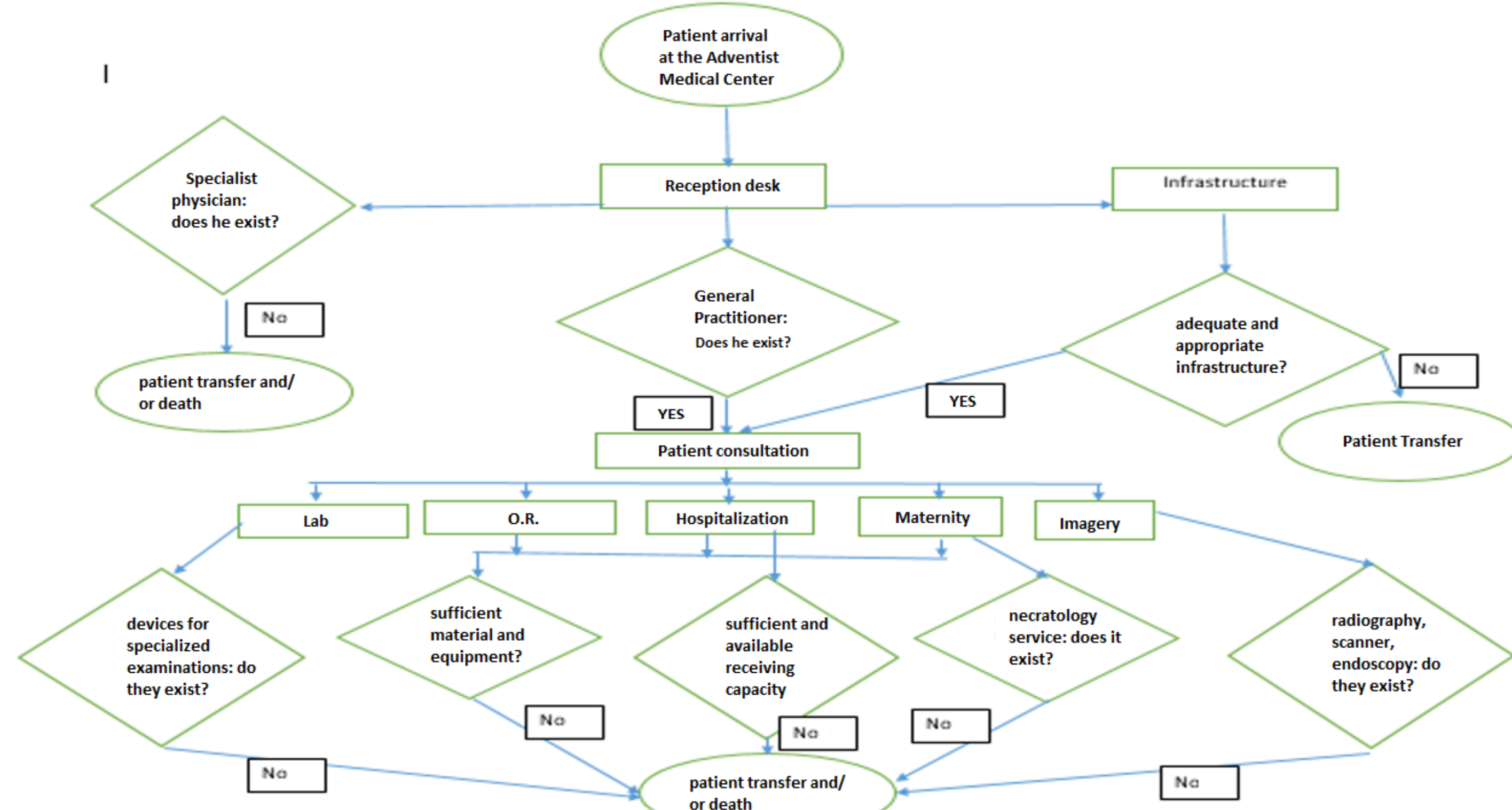
Thus to meet the needs of the population, the Adventist Medical Center of Lubumbashi needs the rehabilitation of its infrastructure, of the drinking water supply, an equipment support in the domain of imaging, maternity, hospitalization, operating room and laboratory

GOAL

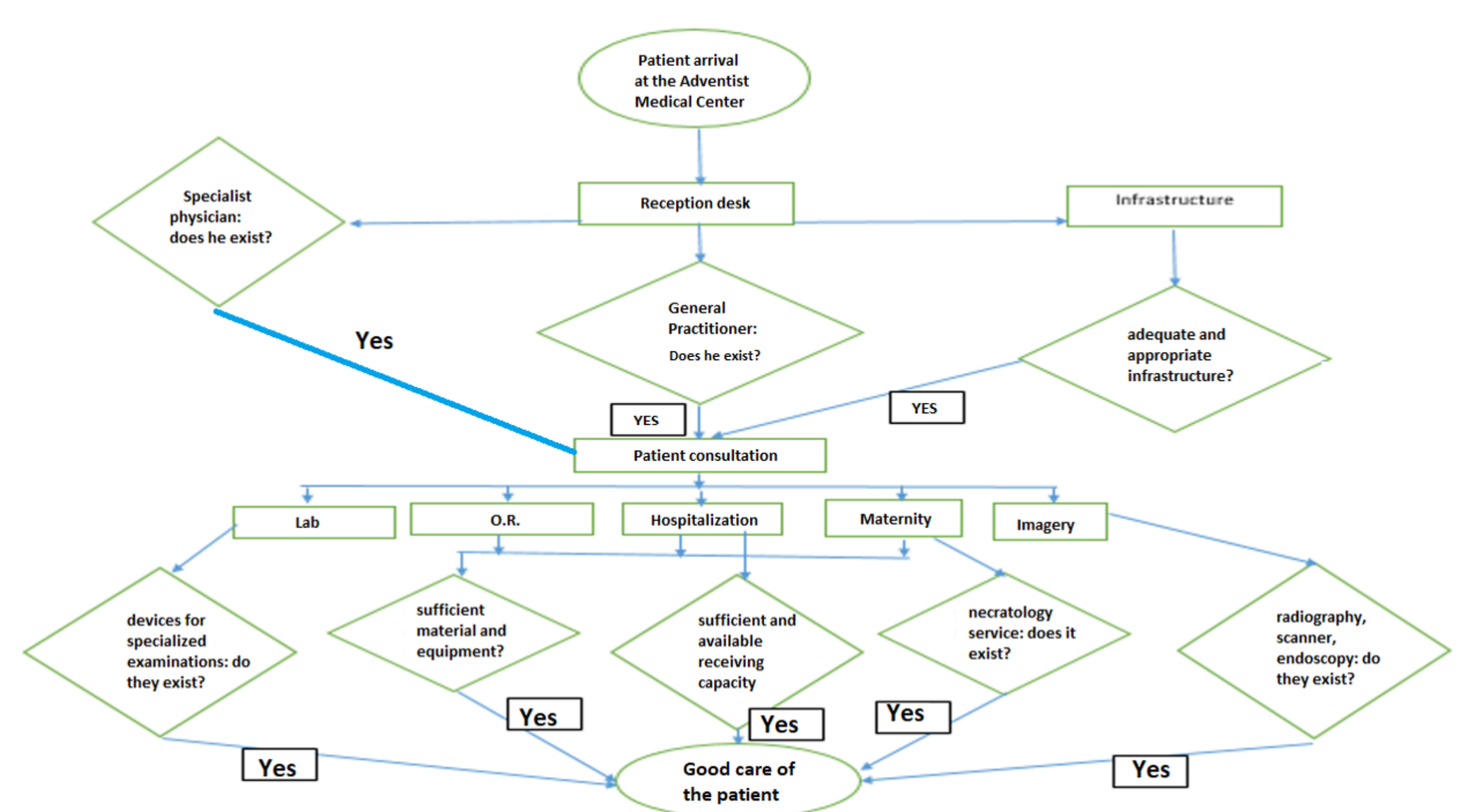
To meet the needs of the population of Lubumbashi, the Adventist Medical Center needs :

- equipment: in the fields of imaging, laboratory, operating theater, hospitalization, maternity, resuscitation and other equipment in general surgery and traumatology.
- rehabilitation of the Medical Center building to increase its capacity.
- Drinking water supply through drilling of wells.
- Nursing staff training, even online: in surgery, pediatrics, gyneco-obstetrics, internal medicine and resuscitation to improve their performance in the adequate care of diseases

CURRENT STATE FLOW MAP



FUTURE STATE FLOW MAP



GAP ANALYSIS

- 1 The current infrastructure and equipment conditions do not allow good patient care
- 2 Improving the quality of care through the rehabilitation of the Medical Center and support in materials and equipment will promote good care for our patients
- 3 The availability of services through the presence of adequate materials and equipment will reduce the morbidity and mortality rate of the population
- 4 The training of doctors in the different specialties will improve the performance of the Medical Center and the care of our patients by providing quality health care.
- 5 The implementation and execution of the healthcare quality improvement project will change our management system through good governance.

APPROACH TO THE SOLUTION

Quantitative results

- the Medical Center is equipped with quality materials, equipment and infrastructure.
- the population of Lubumbashi has a Medical Center accessible at any time of the year.

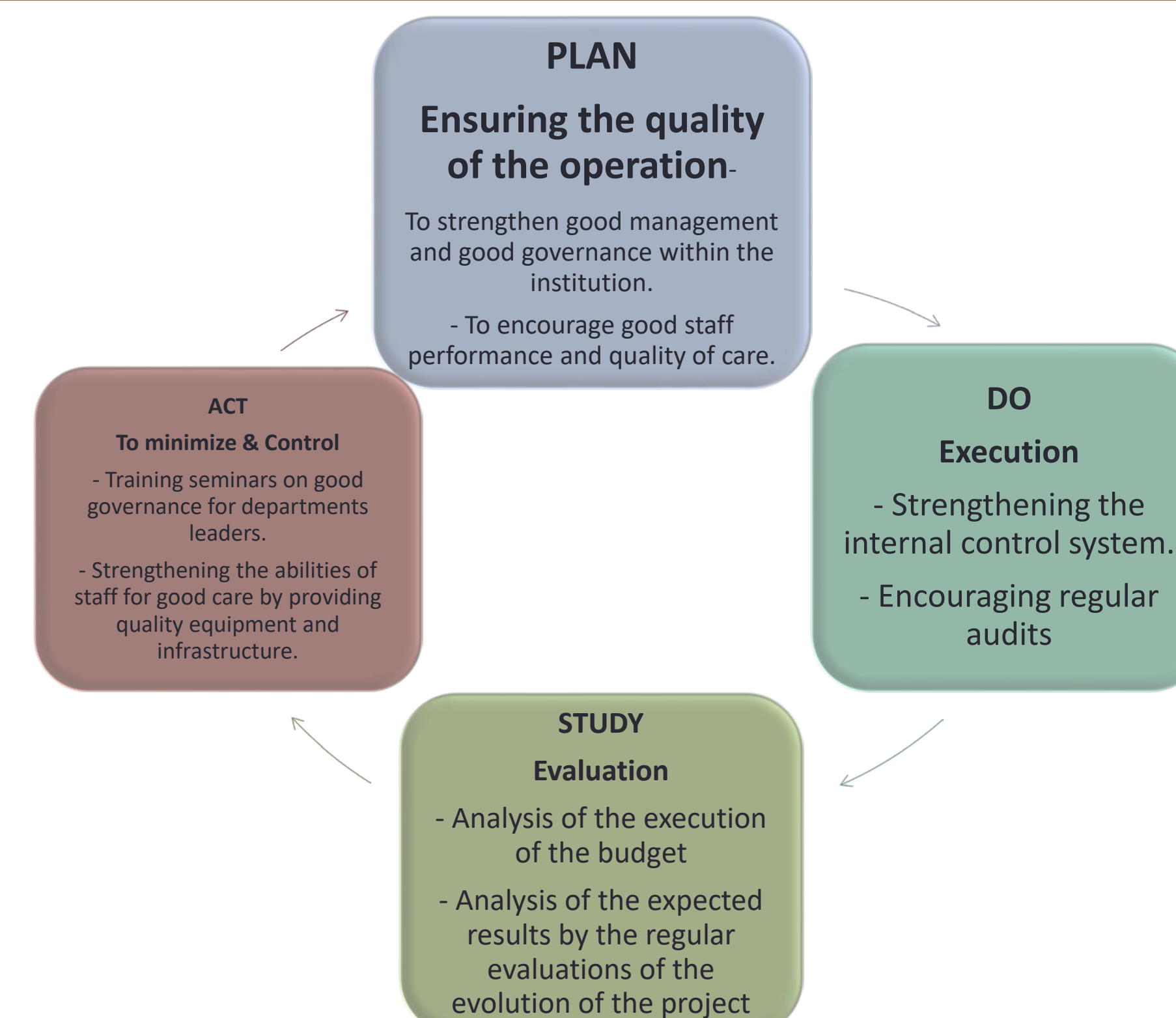
Qualitative results

- Becoming a center of influence by providing quality health care for physical and spiritual well-being through the endowment of the Medical Center of:

1. Equipment: in the areas of imaging, laboratory, operating room, hospitalization, maternity, resuscitation and other general surgery and trauma equipment to improve the care of our patients and improve the accuracy of diagnoses.
2. Rehabilitation of the Medical Center building to improve its patients' capacity and the access to quality health care.
3. Training of nursing staff in surgery, pediatrics, gyneco-obstetrics, internal medicine and resuscitation to strengthen their performance in the adequate management of illnesses.

- Maternal and infant mortality is reduced
- the social disparity in access to care is reduced
- population's health has improved.

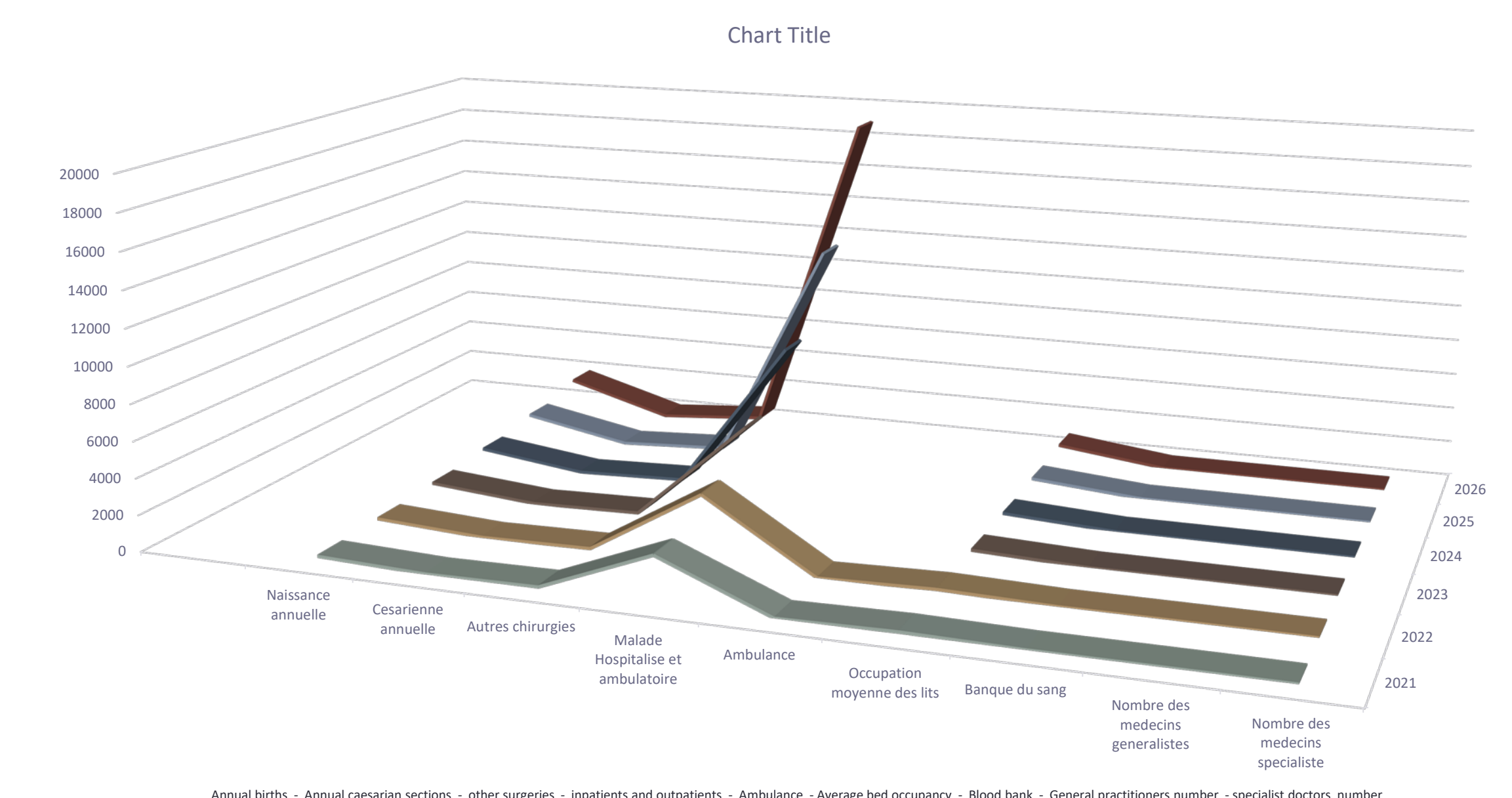
RAPID CYCLE (PDSA)



COMPLETION PLAN

ACTION	WHO	WHEN
project development	Adventist Medical Center	oct-21
project acceptance	Loma Linda University/Partner	nov-21
rehabilitation of the medical center	Partner and Medical Center	2022
equipment and materials	Partner AHI, GHI, LLU	2022-2026
staff training	Partner AHI, GHI, LLU	2022-2026
project evaluation and monitoring	Partner and Medical Center	2022-2026

CONFIRMED STATE



The social and sanitary situation of the city of Lubumbashi, which has a population of approximately 2,056,961 inhabitants, is in a precarious state.

Support to the Lubumbashi Adventist Medical Center by partners, in equipment and for the rehabilitation of this health structure will help us improve the quality of care services and an early diagnosis of pathologies for the proper care of our patients.

NEXT STEPS/AND AFTER?

We plan to continue with the partnership even after 2026, we will continue to strengthen internal control measures and the regular execution of audits for good governance and maintenance of performance for the provision of quality health care services. We are planning to open another Medical Center in Kasumbalesa with the support of partners (AHI, GHI, LLU).