



2020 GLOBAL HEALTHCARE CONFERENCE

Resilience: Growing Through Adversity

VIRTUAL

BREAKOUT SESSION SPEAKERS (Ab)



Jacinda Abdul-Mutakabbir, PHARM.D, MPH, AAHIVP

Jacinda Abdul-Mutakabbir is currently an Assistant Professor at Loma Linda School of Pharmacy in Loma Linda, CA. She completed her Doctorate in Pharmacy at the University of Saint Joseph School of Pharmacy, an accelerated three-year pharmacy program, located in Hartford, CT. Following pharmacy school, she completed her pharmacy residency at the Howard University Hospital in Washington, DC. She also completed an Infectious Disease Pharmacokinetics/Pharmacodynamics (PK/PD) Research Fellowship under the tutelage of Dr. Michael J. Rybak PharmD, MPH, PhD, and went on to earn a Masters of Public Health at Wayne State University in Detroit, MI. As an emerging practitioner, her primary research interests include translating her in vitro research, focusing on multidrug-resistant bacteria, to improve patient treatment strategies in vivo. Her dedication to improving public health has been recognized by the United States Public Health Services, as she was the 2017 recipient of the USPHS Outstanding Service Award. Additionally, her research has led her to be recognized by the European Congress of Clinical Microbiology and Infectious Diseases as one of their 30 under 30 outstanding young scientists, for their ECCMID 2021 31st annual meeting. Dr. Abdul-Mutakabbir continues to be an active member of several professional organizations including the American Academy of HIV Medicine (AAHIVM), Infectious Diseases Society of America (IDSA), American Society of Microbiology (ASM), and the Society of Infectious Disease Pharmacists (SIDP).



Shaunielle A. Abreu, MA

Shaunielle Abreu is currently the director of Human Resources at Loma Linda University. She graduated from Andrews University in Berrien Springs, Michigan with a Bachelor's degree in English and a Master's degree in Communication with an emphasis in Management. In 2010, she relocated to Southern California where she was accepted into the Management Residency program at Loma Linda University Health. After completing the two-year program, she found a home and passion in the field of human resources and has continued to serve in various HR capacities. As the HR director for Loma Linda University, she strives to create a solution-based, employee-focused program.

BREAKOUT SESSION SPEAKERS (As-Bu)



Ayodele Asah, ACA

Ayodele Asah works at Western Nigeria Union Conference of Seventh-day Adventist Church as the SunPlus Coordinator. He has over 13 years of experience in healthcare and school finance and is passionate in providing finance training in the healthcare system, especially within the Adventist Church in Africa. He lives in Nigeria with his beloved wife (Anna) and daughter (Ayodele). Ayodele has a B.S. in Accounting from Obafemi Awolowo University Ife and a Chartered Accountant from the Institute of Chartered Accountant of Nigeria (ICAN).



Elisa Blethen, DIS, MBA

Elisa Blethen has worked in healthcare finance and management since 2001 and has worked for a variety of Adventist healthcare organizations. Currently she serves as the Finance Officer for Adventist Health St. Helena, a 150-bed hospital in Northern California. Prior to this, she served as the MBA/MHA Program Director at LLU School of Public Health for 6.5yrs. She completed a MBA at University of Central Florida in 2006 and a Doctorate in Intercultural Studies at FullerTheological Seminary in 2018. Dr. Blethen has focused her work from a financial perspective to also understand how culture impacts healthcare management in a faith-based setting.



Ben Bunker, MS

With over 15 years of human resource management experience, Ben Bunker is certified as a senior professional in human resources and works as the executive director for Talent Acquisition & Engagement at Loma Linda University Health. He received his master of science degree in human resource management from Chapman University College after matriculating from Utah Valley University in Orem, Utah.



Brent Burdick, MBA, CPA

Brent is Assistant to the Treasurer and Director of Accounting Software at the General Conference of Seventh-day Adventists in Silver Spring, Maryland, USA. He has worked for the church for 23 years in multiple countries and in various financial roles including auditing, accounting, and conference and division CFO. He is also an ordained minister.

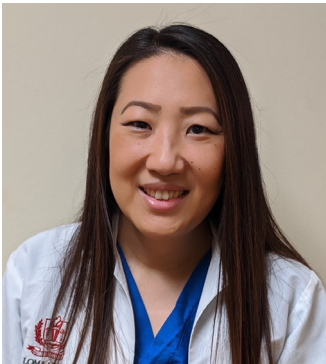


BREAKOUT SESSION SPEAKERS (Bu-Co)



Thomas Bushell, PharmD

Thomas Bushell, PharmD, graduated from pharmacy school from the University of Maryland. He completed both post graduate year 1 (PGY1) pharmacy practice residency and his post graduate year 2 (PGY2) critical care residency at Loma Linda University. Since then, Dr. Bushell has worked as a pharmacist at Loma Linda University Medical Center and is now the clinical pharmacy specialist in the surgical ICU. He is also the director of the PGY2 critical care residency program and holds an appointment of assistant professor at Loma Linda University School of Pharmacy. His research interests include critical care medicine and trauma.



Nam Cho, PharmD, BCPS

Nam Cho, PharmD, BCPS, has worked as a clinical pharmacist at Loma Linda University Medical Center for 8 years and as the clinical pharmacy specialist in the Medical Intensive Care Unit for 7 years, which is currently designated as the "COVID ICU." She is the pharmacy residency critical care program coordinator and holds an appointment of assistant professor at the Loma Linda University School of Pharmacy. Her interests include critical care medicine, infectious disease, and pulmonary hypertension.



Duane Covrig, PhD

Dr. Covrig, a native Californian, has taught at universities in California, Ohio, and Michigan. He has worked in higher education for about 30 years, and is currently a professor at Andrews University in the Department of Leadership. Until 2005, he taught in educational leadership at The University of Akron in Ohio. From 1996 to 1998 he taught religion at Loma Linda University in California. Before that he was a researcher at Loma Linda University and University of California Riverside, and a work/service director at Weimar College. He writes and speaks on professional ethics, ethical decision-making, organizational theory and moral leadership. He also speaks and preaches for various groups on moral health and Adventist views of divine judgment. His wife is a registered nurse and florist. His daughters are in graduate school at Loma Linda University and the Michigan College of Optometry.



BREAKOUT SESSION SPEAKERS (Da-Ed)



Teresa Davis, MA

Working for Loma Linda University Medical Center in the field of human resources management for the past 11 years, Teresa Davis is currently the director of People Services/HR Partners. In this capacity she is responsible for strategic alignment that ensures proper management of the organization's talent, leadership development, coaching and mentoring. She is certified as a senior professional in human resources and holds a certificate in workers compensation. She attended University of California in Riverside and University of Redlands.



Paul Edwards, MBA, CPA, CGMA, FCCA

Paul Edwards currently resides near Loma Linda, California with his wife and two teenage sons. He serves as Executive Director for Internal Audit for Loma Linda University Health. He has lived in six countries and spent twenty years of his career auditing globally for General Conference Auditing Service, most recently as Associate Director for Process Improvement. Paul earned an MBA from the University of Bradford in the UK, is a Certified Public Accountant in the Commonwealth of Virginia, a Certified Global Management Accountant, and a Fellow of the Association of Chartered Certified Accountants. Paul was born in Grenada and grew up in the United Kingdom where he began his denominational career in accounting before moving into auditing in the Trans-European Division. Paul loves to travel and experience new cultures, having visited more than 70 countries, many for extended stays and multiple visits. Whenever he can, Paul loves to get outside, enjoying skiing in the winter and hiking, swimming, and gardening in the summer.

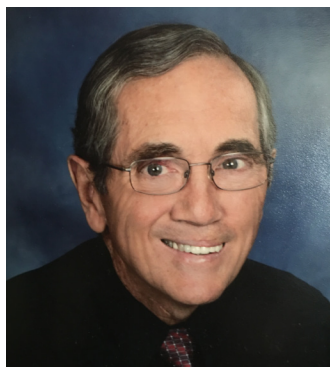


BREAKOUT SESSION SPEAKERS (Ev-Ga)



Dwight C. Evans, MD, FACP

Dwight Evans is a graduate of Southern Adventist University (B.A. in History) and Loma Linda University School of Medicine (M.D.). His Internal Medicine Residency and Endocrinology Fellowship were done at Vanderbilt University. He is Board Certified in Internal Medicine with Sub-Specialty Board in Endocrinology. He served as Professor of Medicine and then Vice President for Medical Affairs at Montemorelos University School of Medicine from 1978 through 1985. He has been an Associate Professor of Internal Medicine at LLU School of Medicine since that time. His most recent administrative function for the past 16 years was as “Chief of Staff/Chief Medical Officer” at the VA Loma Linda Healthcare System. He continues to be a Consultant for the LLU Global Health Institute, AHI, and the GC Health Ministries (HM) Department participating in HM activities in 10 Divisions. His passion is for Healthcare Quality Improvement/Patient Safety and Health Professional Education.



Robert W. Frost, MBA

Originally from Sacramento, California attended Monterey Bay Academy followed by Pacific Union College where he graduated with a business administration degree. Following graduation, he served as a Business Intern with the General Conference of Seventh-day Adventists Auditing Service. During the intern year he assisted in the audit of Loma Linda University (LLU) and Medical Center, along with many other west coast audits. He was recruited by LLU to be the Chief Accountant for the Loma Linda Foundation and to help set up a trust accounting and management system. He has served on various committees, boards and with community service organizations. Retired after 46 years of service to Seventh-day Adventist organizations he volunteers as the CFO for Adventist Health International, a management organization based at LLU, which is committed to partnering with health care services in developing countries. Bob and his wife of 54 years, Danetta, are blessed to now live in San Marcos, California, near their children’s families and grandchildren.



Holly Gadd, PhD, APRN, FNP-BC

Holly Gadd currently serves as School of Nursing dean and professor at Southern Adventist University. Her educational background includes more than 35 years of teaching and educational leadership experience. She additionally maintains active clinical practice as a Family Nurse Practitioner, working in both emergency and internal medicine areas.



BREAKOUT SESSION SPEAKERS (Gr-Ha)



Albin Grohar, PhD

Albin Grohar is Senior Advisor for Foundations and Grants at Loma Linda University Health. Over the past thirty years, he has served in several positions in the University, overseeing fundraising activities, foundation and corporate relationships, and grant writing that has generated millions annually. Dr. Grohar attended Andrews University where he earned a doctorate in Educational Administration, writing a dissertation on fundraising effectiveness. He currently holds a faculty appointment as associate professor in the Loma Linda University School of Public Health. He also serves as the philanthropy officer for Adventist Health International (AHI), where he directs giving campaigns and supports the AHI institutions in developing philanthropy initiatives. Dr. Grohar is an international speaker, speaking on the topic of fundraising and grant writing.



Norman Hamada, PharmD

Dr. Norman Hamada serves as the Director of Clinical Pharmacy Services at Loma Linda University Medical Center where he has worked since 1981. In this role, he supervises 24 clinical pharmacy specialists whose areas of focus include transplant, oncology, critical care, nutrition, and infectious diseases. Previously, he was a staff pharmacist, clinical coordinator, and Assistant Director of Clinical Pharmacy Services at the hospital. In collaboration with the Loma Linda University School of Pharmacy, he acts as the Postgraduate Year One (PGY1) Residency Program Director. He has fulfilled this role since the PGY1 training program began in 1995. Recently, he has worked with the Department of Pharmaceutical and Administrative Sciences to incorporate the contributions of clinical pharmacists during lectures of the Pharmaceutics course for first year students. During the Covid-19 pandemic, Dr. Hamada has served on several interdisciplinary committees to develop treatment approaches for Loma Linda University Medical Center. Dr. Hamada is an active member of the American Society of Health System Pharmacists and the California Society of Health System Pharmacists. He is married with 3 sons.



DP Harris, PhD

Dr. DP Harris is a University Administrator with over 30 years of experience with IT managing and consulting. Most of his career has been spent in Higher Education. He is currently the VP/CIO of Loma Linda University (LLU). In addition to his duties at LLU, he is IT lead for Adventist Health International and country liaison for Jamaica and Ukraine. Dr. Harris has been actively involved in helping our international hospitals and colleges understand their IT needs and aiding in the selection of software and systems to support their endeavors.



BREAKOUT SESSION SPEAKERS (Ha)



Richard Hart, MD, DrPH

Dr. Richard Hart currently serves as President of Loma Linda University Health. He earned his Doctor of Medicine degree at Loma Linda University in 1970, followed by a Doctor of Public Health in International Health at Johns Hopkins University in 1977. Dr. Hart is Board certified in preventive medicine. Dr. Hart has served Loma Linda University since 1972, including serving as Chair of the School of Public Health's Department of Health Sciences, Director of the Center for Health Promotion, Chair of the School of Medicine's Department of Preventive Medicine, Dean of the School of Public Health, and President (previously Chancellor) and CEO of the University. Dr. Hart's vision extends beyond the walls of Loma Linda University not only to the local communities, but to the villages and towns, the hospitals and mission clinics, in the farthest reaches of our globe. He has served as Chief of Party for a USAID project in Tanzania where he developed a national maternal and child health program that is still a model for Africa today. His passion for humanitarian service has led to the development of a variety of programs at Loma Linda University including, Students for International Mission Service (SIMS) and Social Action Community Health System (SACHS)—a local low-cost clinic for the medically underserved. Dr. Hart also serves as president of Adventist Health International (AHI), a management corporation established to restore Adventist mission hospitals worldwide.



Jeffrey Haugen, PharmD

A recent graduate of the Loma Linda University School of Pharmacy he earned a Master of Science in Chemistry from University of Memphis and completed his undergraduate education at Southern Adventist University. He taught English in Russia and worked as a teaching assistant in Chemistry at AdventHealth University and University of Memphis.



Christopher Hauschild, PharmD

Christopher Hauschild earned his PharmD degree at the University of the Pacific in 2002. Since that time he has worked at the Loma Linda University Medical Center in numerous roles, working as a clinical pharmacist for both the adult and children's hospital and at the Coumadin clinic. Currently he is the clinical pharmacy specialist for cardiology at the adult medical center. He is also an assistant professor at the Loma Linda University School of Pharmacy and has taught various classes over the years for the school of nursing, the physician assistant program, and the His research interests include anticoagulation and heart failure.



BREAKOUT SESSION SPEAKERS (He-Ka)



Katie Heinrich, MBA

After completing a management residency in 2019 at Loma Linda University Health, Katie Heinrich now works as an employee engagement specialist. She received her master in business administration degree in marketing from University of Redlands, where she studied abroad in Italy, Croatia and Slovenia. In the summer of 2018, she traveled with 100 volunteers as an assistant trip leader on a month-long Loma Linda University Health and Adventist Health International sponsored mission trip to Angola, Africa. Heinrich enjoys public speaking and has served as co-pastor at a Seventh-day Adventist Church in College Place, Washington.



Patricia S. Jones, PhD, RN, FAAN

Dr. Patricia S. Jones is Distinguished Emerita Professor of Nursing at Loma Linda University, where she served and taught from 1987 to 2017. Since 1997, Dr. Jones has also served as Associate Director of the Department of Health Ministries at the General Conference of Seventh-day Adventists. In 1967, she founded the School of Nursing at Hong Kong Adventist Hospital, going on to later develop and direct a graduate program in nursing at Adventist University of the Philippines. From 1985-87 she served as Associate Director in the departments of health and education in the Far Eastern Division of Seventh-day Adventists in Singapore, guiding nursing education and practice across East and Southeast Asia. Dr. Jones developed an outreach program for global nursing at Loma Linda University School of Nursing in 1994, and directed it until 2017. In her current position as Associate Director of Health Ministries, Dr. Jones is concluding a five- year collaborative project between the General Conference, Loma Linda University, and the World Health Organization designed to reduce maternal and infant mortality by improving the quality of midwifery education in four sub-Saharan African countries.



Alfred Kambaki, MDiv, BCC

Alfred was born and raised in Zambia, Africa. He entered the gospel ministry, as a District Pastor, in 1983. He later served in different capacities, such as Director for Sabbath School and Personal Ministries, Ministerial Secretary, and Conference President. He immigrated to the United States in 1995, via Andrews University. Alfred is a Board Certified Chaplain in the Association for Professional Chaplains. He is also a Certified Educator in the Association of Clinical Pastoral Education Inc. He is married to Bessie, and together have four adult children (three boys and a girl).



BREAKOUT SESSION SPEAKERS (Ki-Ko)



Jeffrey Kim, MD

Dr. Jeffrey Kim is a graduate of the University of Pennsylvania. He obtained his medical degree at Eastern Virginia Medical school. He completed his residency training in Family Medicine at Michigan Medicine. Dr. Kim is a practicing Family Medicine physician and faculty member at Loma Linda University Health (LLUH), and SAC Health System located in the California Inland Empire. In 2016, Dr. Kim was appointed to lead the implementation and growth of Telehealth across LLUH. Dr. Kim resides in Rancho Cucamonga and enjoys spending time with his wife and two sons.



Kathryn Toy Knecht, PhD

An associate professor of Pharmacology at Loma Linda University since 2004, Kathryn Toy Knecht is originally from Lansdale, Pennsylvania, she earned her PhD degree in Toxicology from the University of North Carolina. Her work has been published in nearly 100 journal articles, book and symposium chapters, review articles, abstracts, presentations and other publications. In her spare time, she coordinates an after-school music program for the underserved children in the local community, which she done for the past 12 years.



Sunday Komolafe, PhD

Sunday B. Komolafe is Adjunct Professor of Intercultural Studies and Leadership Development at Africa Centre for Theological Studies (ACTS), Lagos-Nigeria. He is a man of many parts—missionary, scholar, and churchman. As a missionary, he has extensive cross-cultural experience, having served in Hong-Kong, South Korea, Malaysia, Singapore, Indonesia, Bangkok, New Zealand, and Australia. As a scholar and churchman, he was professor of practical theology and founding director Urban Missions and Wholistic Ministries at West African Theological Seminary, Lagos-Nigeria. He continues to serve as visiting professor of African studies and intercultural education at the University of California, Los Angeles (UCLA). His articles have been published in a range of scholarly peer-reviewed journals, including Missiology, Missionalia, and WATS Journal. He is the author of The Transformation of African Christianity: Development and Change in the Nigerian Church (2013).



BREAKOUT SESSION SPEAKERS (Li-Ma)



Angela Li, PhD, MBA, BCC

Angela H. Li, PhD, serves as the program director of the MS Chaplaincy program and an assistant professor at the Loma Linda University School of Religion. Angela is a full board-certified chaplain of the Association of Professional Chaplains and worked in the field of hospice care prior to joining the Chaplains Department at Loma Linda University Medical Center. She was endorsed by the Adventist Chaplain Ministries, ordained through the Seventh-day Adventist Church Southeastern California Conference, and commissioned by the General Conference. Angela currently also volunteers as one of the pastoral staff at Mission Road SDA Church in Redlands, California. Angela is married to Ken. Together, they have a teenage son and daughter. She loves spending time and traveling with her family, relaxing with her dog, enjoying food from all cultures, sharing life over meals with friends, and reading (especially books about animals). She sees God's love and compassion as a healing agent and basis of spiritual growth for all. Her academic passion and research interests include pastoral formation, spiritual care/healthcare chaplaincy subjects, spirituality, Asian American theology, formation of youth, and gender studies.



Iris Mamier, PhD, MSN, RN

Dr. Mamier, associate professor, teaches in the Graduate Programs and has been serving on several international accreditation visits of faith-based universities. She is passionate about empowering nurse leaders locally and globally through graduate education. She enjoys team teaching both, with colleagues within and outside of her department. Her scholarly and practice interest centers on whole person care with specific attention to patients' spiritual needs and nurses' support of these. Beside collaborative research within the university, the Medical Center, the Center for Spiritual Life & Wholeness (SR), and the Department for Medical Education (SOM), she recently engaged in cross-cultural research with a Veteran hospital and Sahmyook University in Seoul, South Korea. Other research involvement has focused on student retention in nursing education, program evaluation, and informal care giving. Dr. Mamier has been serving on University Faculty Council, Faculty Development Committee, and Faculty of Graduate Studies (FGS) as well as FGS Council and has been an active member of the Honor Society of Nursing Sigma Gamma Alpha chapter since 2003 serving on the Board of Directors between 2015-2020.



Titus Matemavi, MDiv, BCC

Born and raised in Zimbabwe where he served as a pastor and church administrator. Titus moved to the US (Michigan) in December 1995 and then again to California in December 2014. He has been serving as a Healthcare Chaplain since 2000 and is Certified with the Association of Professional Chaplains Board.

BREAKOUT SESSION SPEAKERS (Mc-Mo)



Randy P. McDonough, PharmD, MS, BCGP, BCPS, FAPhA

Dr. Randy McDonough is co-owner of Towncrest, Solon Towncrest, and Towncrest Compounding Pharmacies. He is also co-founder/co-owner of Innovative Pharmacy Solutions. Dr. McDonough is Professor of Pharmacy Management and Innovation, Loma Linda University School of Pharmacy (LLUSP). At LLUSP, he teaches courses to pharmacy students in the areas of practice management, entrepreneurship, and innovation. He also serves as coordinate for the Community Pharmacy Residency program at LLUSP and is board certified in geriatrics and as a pharmacotherapy specialist. Dr. McDonough has published and presented extensively on the subject of pharmaceutical care and MTM in the community pharmacy setting, and has co-authored a book on pharmaceutical care and has written chapters for several other texts. Randy is a member of the American Pharmacists Association, National Community Pharmacists Association, American Society of Consultant Pharmacists, American College of Clinical Pharmacy, and the Iowa Pharmacists Association. He has been recognized nationally for his work and has received the APhA Daniel B. Smith Award, NCPA Independent Pharmacist of the Year, IPA Innovative Pharmacist of the Year, and Parata's Entrepreneurial Pharmacist of the Year. He is currently on the Board of Trustees with the American Pharmacists Association.



Kathy McMillan, MA, RN

Kathy McMillan is the director of Employee Spiritual Care & Wholeness at Loma Linda University Medical Center. In that role, she helps to promote an environment that nurtures spiritual health and wholeness. She also has directed Loma Linda University Health's nursing bereavement programs for 25 years. Kathy received her BS in nursing from Loma Linda University and began her nursing career in oncology. Later, she completed an MA in clinical ministry. Her research areas include employee wellbeing and spiritual care.



Dianna Montgomery

Dianna Montgomery, a graduate of University of Phoenix, is the manager of employee engagement for Loma Linda University Health, where she provides administrative project management and oversight of employee engagement programs and initiatives. Her past experience includes 12 years of management for Macy's, a major national department store.



BREAKOUT SESSION SPEAKERS (Nd-Ng)



Emily Ndlela , MBA, CPA (CA)

Earned her Bachelor of Arts in Accounting from the University of Eastern Africa, Baraton, and a Master of Business Administration in Financial Management from La Sierra University in Riverside, California. She is also a Certified Public Accountant (CA). Mrs. Ndlela currently serves as Assistant Vice-President for Financial Planning and Analysis for Loma Linda University Health. She oversees the corporate teams responsible for financial planning/budgeting, capital planning, cost accounting, and revenue analytics for the LLUH entities. Mrs. Ndlela has a passion for assisting Adventist mission hospitals to improve their financial and business operations. She volunteers with Adventist Health International and serves as a board member of Kendu Adventist Hospital in Kenya.



Aimable Ngendahimana, PhD, MSc, BSc

Dr. Aimable Ngendahimana is a faculty member at the Loma Linda University School of Pharmacy, where he teaches and directs two courses in pharmaceuticals in the doctor of pharmacy program. Dr. Ngendahimana strongly believes in collaborative teaching of pharmacy sciences in which clinical pharmacy professionals and pharmaceutical scientists work together in the advancement of pharmacy education. Consequently, he has been collaborating with a team of LLUH clinical pharmacists to develop instructional materials that are incorporated with current pharmaceutical challenges and their corresponding innovative solutions developed in a clinical setting. He has been collaborating with other LLUH pharmacists to discuss challenges that are being encountered during COVID-19 pandemic and the countermeasures being taken in response. Initial findings of these ongoing collaboration will be presented at the virtual Global Health Conference in November 2020. Dr. Ngendahimana is an active member of the Southern California Pharmaceutical Discussion Group. During his free time, Dr. Ngendahimana enjoys mountain hiking and playing tennis.



BREAKOUT SESSION SPEAKERS (Ni-Pa)



Jan M. Nick, PhD, RNC-OB, CNE, ANEF, FAAN

Her interest and expertise lie in creating active learning experiences for students, increasing institutional capacity for evidence-based practice (EBP), and specializing in international faculty development. Access to current, valid, evidence-based information is a goal, yet traditional models of information access place barriers for developing countries as well as developed countries due to cost and lack of globalization of nursing's knowledge. Because of this, her research activities focus on using technology to enhance patient care, documenting nursing's progress in the Open Access movement to improve access to valid and reliable scientific information, and documenting knowledge and skills of Evidence-based practice (EBP) globally using an objective measurement that has been translated in to several languages.



Daniel Orillosa, MBA

Daniel Orillosa earned a BSC in Accounting and a MBA at the University of the East in Manila, Philippines. Daniel's career has allowed him to serve in several countries around the world. He has worked as Vice President of Finance and Business Manager at both Mountain View College in the Philippines and Bethel College in South Africa. He also held the role of Associate Treasurer of the Eastern Africa Division in Harare, Zimbabwe and was the Treasurer and Secretary of the Middle East Union in Nicosia, Cyprus. Currently, Daniel works for the General Conference of SDA in Silver Spring, Maryland as both the Associate Director of Adventist Accounting System and the SunPlus Implementation Manager.

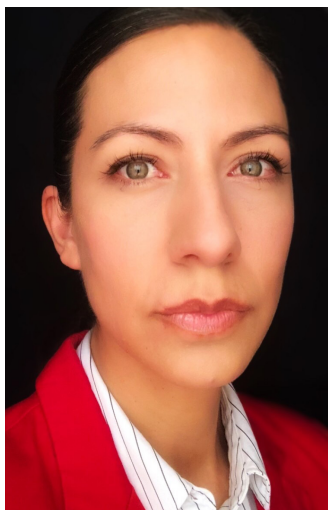


Elde Mel B. Paladar, BS, RMT, MS

Is an assistant professor at Loma Linda University in the Department of Clinical Laboratory Science and a Project Manager at Malamulo Adventist Hospital in Malawi, Africa - a Loma Linda University Health Global Campus.



BREAKOUT SESSION SPEAKERS (Pi-Pe)



Cesiah Yareth Pimentel Meléndez, PhD

Native from Mexico, Cesiah Pimentel studied bachelors in International Studies and MBA, this last from Montemorelos University. She has served as an interdivision employee from 2004 to 2013 in different positions: as a Business Manager in Lusaka Eye Hospital and the Lusaka Adventist Dental Services in Zambia (2004-2009), and as an Administrator in the Maluti Vision Center at Maluti Adventist Hospital in Lesotho (2019-2013). Later, Cesiah served as a Chief Quality and Certification Officer at Hospital La Carlota, back in Mexico (2013-2017). From 2018, she returned to overseas service and currently she is serving in Rwanda at the East Central Africa Division (ECD) Medical School, at the Adventist University of Central Africa as the Associate Dean for Quality Assurance and Mission Effectiveness. In 2020, she concluded her PhD degree in Leadership from Andrews University in which she focused her studies on Adventist healthcare administration. Her husband, Eustace A. Penniecook, is a retina surgeon and they have two boys Eustace Jr. and Jared.



Anne Berit Petersen, PhD, MPH, RN, CNS, CHES

Dr. Petersen is an Assistant professor and the Director of Global Nursing at the Loma Linda University School of Nursing. She completed a Bachelor's degree in English at Washington Adventist University, a Bachelor's in Nursing at Andrews University, and Master's degrees in Nursing and Public Health at Loma Linda University, where she obtained her advanced practice certification as a Clinical Nurse Specialist, specializing in Maternal/Child Nursing. She has worked in a range of clinical settings; however, Pediatrics, Family Nursing, and Health Promotion are where her heart lies. Also, she has extensive global health experience and has worked in a range of capacity-building roles with nurses in Tanzania, China, Afghanistan, Nicaragua, and Ethiopia. She recently completed a Postdoctoral Fellowship in Tobacco Control Research at the University of California San Francisco (UCSF), and her program of research focuses on global tobacco control. She is currently working with collaborators in Mongolia, testing the effectiveness of cytisine, a naturally occurring plant alkaloid found in plants, for smoking cessation. She remains passionate about the empowerment of nurses and other health professionals both here in the U.S. and globally in the prevention and treatment of non-communicable diseases.



BREAKOUT SESSION SPEAKERS (Pr-Re)



Tiffany Priester, MD

Dr. Priester earned her medical degree at Loma Linda University School of Medicine, after which she completed an Internal Medicine Residency at Mayo Clinic in Minnesota and a Cardiovascular Disease Fellowship at the University of Utah. Over the last fifteen years, Dr. Priester has performed numerous research studies on the subject of cardiovascular health and has been published in a myriad of medical journals. She has worked as a physician, hospitalist, and cardiologist in a variety of hospitals, perhaps the most notable of which being in Blantyre, Malawi, where she lived and worked for five years as the only Cardiologist in the country. Currently, she works as a Staff Cardiologist in the VA Loma Linda Healthcare System. Dr. Priester is married with one daughter and enjoys international travel and humanitarian service, photography, and hiking in the outdoors.



Edelweiss Ramal, PhD, RN

Dr. Ramal has been a nurse educator for over 40 years. Twenty-five of these years she taught and directed academic programs in Mexico and Botswana. Presently, she is Emerita Associate Professor of the graduate faculty at Loma Linda University School of Nursing, where she taught for 12 years and directed the LLUSN Off-campus Master of Science in Nursing program. Her two main areas of research are: (1) Impact of a Plant-Based Diet and Support on Mitigating Type 2 Diabetes Mellitus in Latinos Living in Medically Underserved Areas and (2) The Essentials of Adventist nursing. She has received grant monies from The Diabetes Action Research and Education Foundation and has published in the American Journal of Health Promotion, Journal of Immigrant and Minority Health, and Nurse Educator. She is one of the creators of a Distinctive Framework for Adventist Nursing based on qualitative research published in the Journal of Adventist Education.



Michael Reid, PhD

Michael Reid has more than 15 year of experience in Information Technology in the United States and the Caribbean in leading and directing technology operations across broad disciplines in academia and healthcare. Some of these areas include: hardware implementation, software development, project management, decision support and business intelligence systems, strategic planning, staff development, teaching and research, and technology implementation. He is currently an Information Technology Consultant for Adventist Health International and an Assistant Professor of Computer and Information Sciences at Northern Caribbean University in Jamaica.



BREAKOUT SESSION SPEAKERS (Ri-Sa)



Carl Ricketts, Jr., MDiv, BCC

Carl is the eldest of two children born to Carl Sr. and Yolanda Ricketts in Brooklyn, New York. After moving to Orlando, Florida, he went on to attend the University of Florida. In college, he was active in student campus ministries, street ministries and prison ministries which helped form his passion for a life of service in healthcare. After graduating from UF with a Bachelor in Business Administration and Economics minor, he sensed God's call on his life. He went on to complete his Masters in Divinity from Andrews University. Carl served as the Social Director for both the Seminary Student Forum and for the Black Student Association of the Theological Seminary. Post graduate studies, Carl completed 4 units of Clinical Pastoral Education. For 12 ½ years, Carl served at Advent Health as a Staff Chaplain, Senior Chaplain and Director of Pastoral Care. Carl responded to God's call and now serves as the Director of Chaplain Services at Loma Linda University Medical Center in Loma Linda, CA and is currently pursuing his Doctor of Business Administration. He declares that the Lord has blessed him more than he could ever imagine- with a beautiful wife Candice (Can-deece) and three lovely children, Carl, III, Cristian & Caitlyn. He is humbled and overjoyed to have the opportunity to serve God & His people each day. His goal: To see Jesus face to face!



Jesús Salomón, MHRM

Jesús Salomón graduated from Cal Poly Pomona with his BS in Business Administration, after which he obtained his Masters in Human Resources Management at the Keller Graduate School of Management in Pomona, California. He began his career in the role of Employee Relations Representative at Boone International and HR Manager of Cal-Mold Inc. He then moved into the world of Higher Education by working as the Senior HR Generalist at Devry University in Pomona, California. It was after this job that he transitioned to Loma Linda University, where he worked as the Talent Services Specialist, Senior Recruiter, and currently the Manager of Talent Acquisition. Jesús is skilled in recruitment and retention, employee relations, and HR policies and procedures.



Michael R. Samardzija, PhD, JD

Michael Samardzija, PhD, JD is Vice President for Research Affairs. He spearheads the industry and governmental relations as those relate to innovation, entrepreneurship, and company formation. Dr. Samardzija is an intellectual property attorney and has represented numerous life sciences companies at all stages of development. Prior to becoming an attorney, Dr. Samardzija was a scientist in industry and academia.

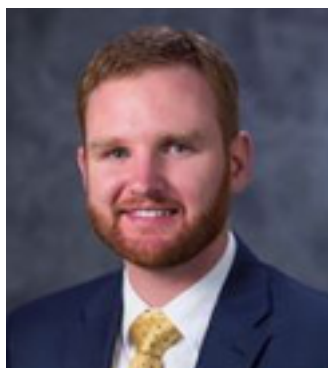


BREAKOUT SESSION SPEAKERS (Se-Si)



Preston Seaberg, MD

Dr. Seaberg is an Assistant Professor of Medicine in the Mayo Clinic College of Medicine and Science and a Senior Associate Consultant in the Division of Hospital Internal Medicine at the Mayo Clinic Hospital in Phoenix, Arizona. As a generalist, he relishes the challenge of achieving the breadth of knowledge, depth of knowledge, practicality and creative problem solving skills necessary to provide quality care to the diverse persons and medical problems he encounters. He is also an inveterate educator and enjoys teaching medical students, medical residents, patients, nurses and just about anybody who will speak with him. When he is not in the hospital, he delights in reading, hiking, listening to podcasts, playing soccer, taking photos and traveling.



Lucas Secor, MBA

Lucas Secor currently serves as executive director of Finance at Loma Linda University Medical Center - Murrieta. He started his career at Loma Linda University Medical Center as a business intern and management resident, before joining finance services where he held several positions before moving to the Murrieta campus. Lucas earned an MBA from the University of Southern California, Marshall School of Business. Before that, he completed undergraduate education at Walla Walla University, where he graduated with a BBA in Business, concentrating in Accounting. Lucas supports international hospitals by serving on the Adventist Health International (AHI) administrative committee. He serves as the country liaison with the AHI institutions in Botswana.



Ben Siapco, MS

Ben Siapco is a volunteer clinical laboratory consultant and trainer for Adventist Health International since his retirement from Loma Linda University Medical Center in June of 2012. He has been instrumental in improving more than thirty hospitals' and clinics' laboratories around the world including two institutions in Kabul, Afghanistan. He is a BS Medical Technology graduate of Adventist University of the Philippines, Cytotechnology graduate of LAC-USC Medical Center, and earned a Master of Science degree in microbiology from Loma Linda University in 1971. A couple of journal articles were published in Journal of Virology and Acta Cytologica. He is the recipient of several awards including the Global Service award received in June 2018. Currently lives in Loma Linda with Clarita, his wife of 52 years.



BREAKOUT SESSION SPEAKERS (Vy-Yo)



Ronald Vyhmeister, PhD

Ronald Vyhmeister began his journey in business by obtaining a MBA at Andrews University, after which he completed studies in both Finance & Information and Computer Science. He then obtained his PhD in Business Administration with a concentration in Management Information Systems at the University of Illinois at Chicago. Dr. Vyhmeister has a wealth of work experience, and currently fulfills the roles of both Academic Dean and IT Manager at Middle East University in Beirut, Lebanon. He has been published in numerous scientific journals and has presented his work around the world. Dr. Vyhmeister is fluent in four languages (English, Spanish, French, and Portuguese) and excels in information technology skills.



Dolores Wright, PhD, RN

Dolores Wright began her nursing career as a Public Health Nurse (PHN). She has worked in various areas of PHN and her current practice area is home health care nursing. She has taught PHN at three different colleges and universities, and two diploma programs in Africa. Over the past 18 years about 200 LLU nursing students have had the opportunity to participate in a cross-cultural, study-abroad PHN experience in Africa which she directed and taught.



Peter S. Young, DDS, MAGD

After graduating from Loma Linda University in 1988, Dr. Peter Young served into Hong Kong Adventist Hospital, Dental Department from 1989 to 1996; and was the Director of Dental Services from 1992 to 1996. Upon returning to the United States, he owned and maintained a full-time thriving private practice in Arcadia California and was a president of the Arcadia Chamber of Commerce. He is an Assistant Professor at LLU where he has taught Esthetic Dentistry, Practice Management Courses and worked with students in the clinic on a part-time bases. Dr. Young is a Fellow & Master of the Academy of General Dentistry; and is a clinical instructor and product adviser at the Kois Center, Seattle Washington. Over the 32 years in dentistry he has accumulated over 4000 hours of continue dental education. In addition, he earned certificates in Executive Health Care Leadership and Healthcare Change Management from Cornell University and completed the one year Lead Six Sigma Black Belt training. Dr. Young is passionate in providing quality comprehensive dental care and high quality customer service to his patients. He also enjoys being a mentor to students and young dentists, to inspire them to be quality clinicians and community leaders.



BREAKOUT SESSION SPEAKERS (Zi)



Mark Zirkelbach, MS

Mark Zirkelbach is accountable for the automation services provided to Loma Linda University Health System which is comprised of 6 hospitals, a large faculty practice group, and partners of the Health System. He works closely with all the Loma Linda University Health entities to support their business needs, with innovation and cost optimization being primary drivers. Mark became the Chief Information Officer at Loma Linda University Health System in December of 2008. Additionally, he is an Assistant Clinical Professor with the School of Allied Health at Loma Linda University instructing the Master of Health Informatics program course on Leadership Perspectives and Practice. Mark began his career in healthcare at Daughters of Charity/Ascension Health where he worked for 15 years in various IT Leadership positions and then three years as the CIO at a large, independent multi-specialty group. He has also worked as a management consultant for several years in healthcare and as a CIO in a large banking system for a short period. Mark is married with three children; his wife Cindy is a Pediatric RN at a Federally Qualified Health Care facility. He earned his master's degree at the University of Evansville in public service administration and he enjoys working with his colleagues in supporting the Mission of LLUH. When he gets the opportunity, he likes to backpack in the mountains found in California.

